



EXPRESSIONS OF INTEREST

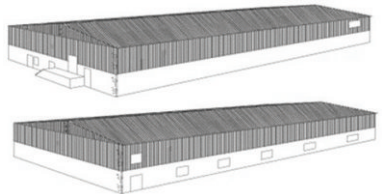
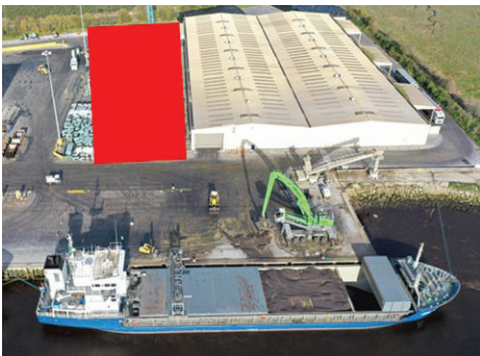
Exciting Warehousing Development Opportunity within Drogheda Port

Drogheda Port Company are inviting Expressions of Interest from businesses looking to develop a new cargo warehouse in a strategic port location on the North East Coast.

With planning permission in place since 2020 (Planning Ref 20733), this new warehouse development has quayside access and is within easy reach of the M1 motorway.

A combined floor space of over 4400m² means that this development offers flexibility to cater for a wide range of cargoes.

Drogheda Port, as one of Ireland's largest bulk ports currently caters for bulk needs across agricultural, mineral, waste, mining and manufacturing sectors on a daily basis. The flexibility in its design also provides the facility to develop 3 separate warehouses under one roof.



Expressions of Interest can be sent to:



Drogheda Port Company, Harbourville, Mornington Road,
Drogheda, Co Meath, A92 K5RN



Maritimehouse@droghedaport.ie